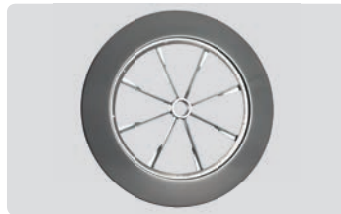




Lenticular disc base

confer offers with a high quality and selected design a large assortment of fixed and rotatable substructures. Lenticular disc bases made of brushed stainless steel as well as lenticular disc bases rings with different wooden inserts.



Ring for lenticular disc bases

625 mm – brushed stainless steel Art-No. DG 60-362535
(Insert of wood required)



Wooden inserts for lenticular disc base ring

Walnut

Art-No. DG 60-062550



Oak

Art-No. DG 60-062560



Without painting

Art-No. DG 60-062545



Lenticular disc base

625 mm – brushed stainless-steel Art-No. DG 60-062530
625 mm – black Art-No. DG 60-062515